

**Tillbridge Solar Project
EN010142**

**Volume 6
Environmental Statement**

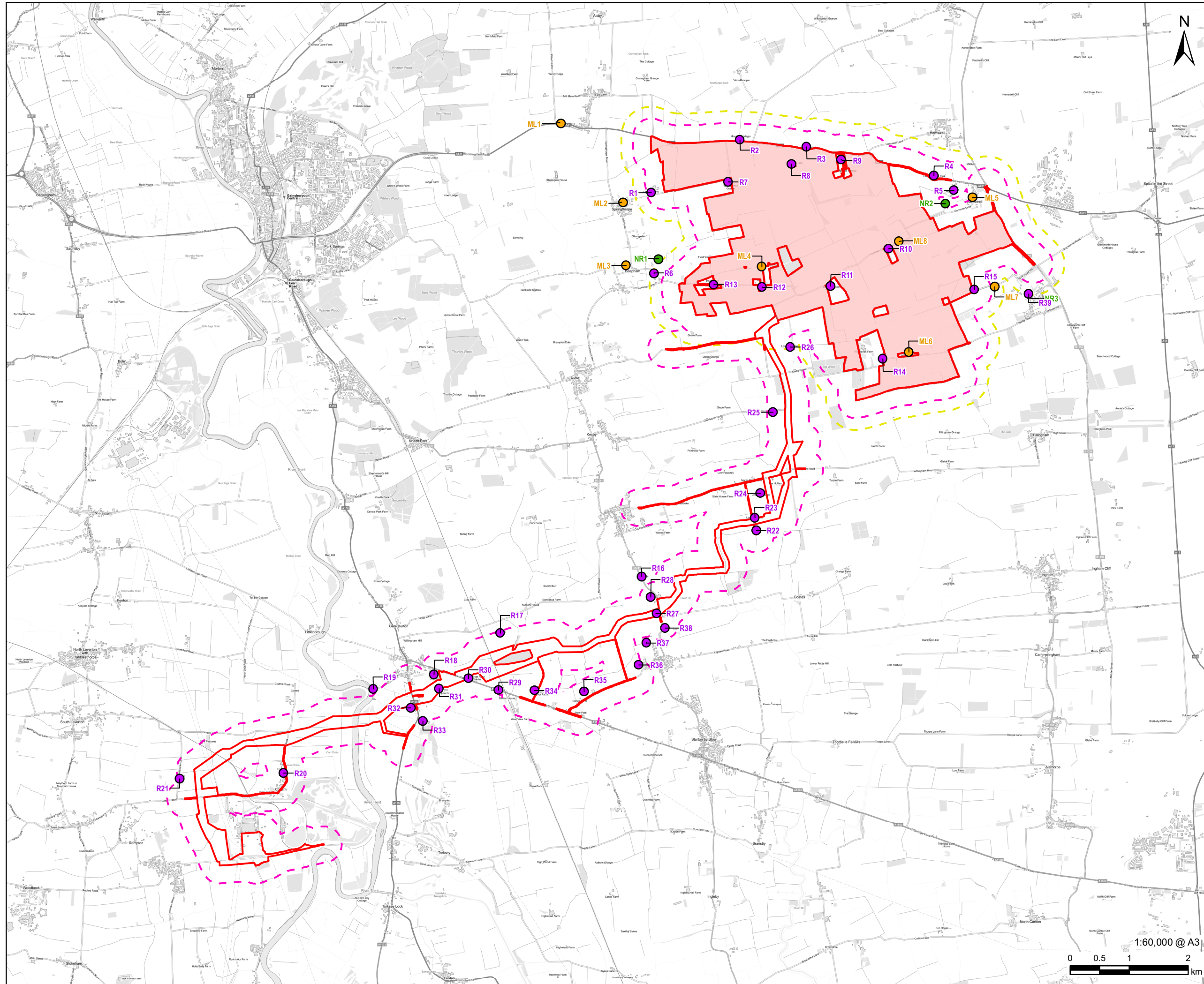
**Figure 13-1: Noise Sensitive Receptors and Noise
Monitoring Locations**

Document Reference: EN010142/APP/6.3

**Regulation 5(2)(a)
Infrastructure Planning (Applications: Prescribed Forms and
Procedure) Regulations 2009**

**April 2024
Revision Number: 00**

tillbridgesolar.com



PROJECT
Tillbridge Solar Project

CLIENT
Tillbridge Solar Ltd

CONSULTANT
Aldgate Tower
2, Leman Street
London, E1 8FA
United Kingdom
T +44-0207-645-2000

- LEGEND**
- Order limits
 - Principal Site Boundary
 - Residential Receptor
 - Non-Residential Receptor
 - Noise Monitoring Location
 - 300m Buffer - For Construction Noise Study Area
 - 500m Buffer - Operational Noise Study Area around the Principal Site

NOTES
Contains Ordnance Survey Data © Crown Copyright and database right 2024.
© Crown copyright and database rights 2024
Ordnance Survey 0100031673.

ISSUE PURPOSE
DCO Submission
PROJECT NUMBER
60677969

FIGURE TITLE
Noise Sensitive Receptors and Noise Monitoring Locations

FIGURE NUMBER
Figure 13-1

The drawing has been prepared for the use of AECOM's client. It may not be used, modified, reproduced or relied upon by third parties, except as agreed by AECOM or as required by law. AECOM accepts no responsibility, and denies any liability whatsoever to any party that uses or relies on this drawing without AECOM's express written consent. Do not scale this document. All measurements must be obtained from the stated dimensions.